

Stock Code: 300165

TO BE A WORLD-LEADING ANALYTICAL TESTING SOLUTIONS PROVIDER !

GC-MS 6800

Gas Chromatograph – Mass Spectrometer 6800

GC Specifications	
Inlet temperature	Max. 450°C
Pressure range	0-100psi, ±0.002psi
Pressure control mode	Electronic pressure control (EPC), support CV and CC
Split mode	Split/splitless, max. split ratio: 1000:1
Column oven working temperature	Room temperature+4°C ~450°C
Heating rate	Up to 120°C/min
Temperature programming	7 stages/ 8 platforms
Auto Sampler	Optional
MS Specifications	
EI source ionization energy	5eV ---250eV (Adjustable)
Mass range	1.5- 1000amu
Resolution	Unit resolution (full width at half maximum)
Ion source temperature	100---350°C
Filament emission current	0-350 μA
GC-MS Interface temperature	Max. 450°C
Stability	±0.10 amu/48 hrs
Sensitivity	full scan, 1pg OFN at m/z 272 with S/N >30:1 (RMS)
Scan rate	Up to 10000 amu/s
Vacuum	Turbo molecular pump(67L/s)
Detector	High energy dynode electron multiplier

# GC-MS 6800

## Gas Chromatograph – Mass Spectrometer

- High performance, high reliability
- Low cost for customers of all types
- Holding multiple patents



Hotline: 800-9993-800  
400-7102-888

### Jiangsu Skyray Instrument Co., Ltd.

Add: 1888, West Zhonghuayuan Rd., Yushan, Kunshan, Jiangsu Province

Fax: +86-512-57017261

Website: www.skyray-instrument.com

E-mail: sales@skyray-instrument.com

Test data in this manual, if not noted, is our company's test data. All information in this manual is for reference only, which is subject to any change without notice.

Skyray Instrument Copyright  
Press date:2013.05.20



## GC-MS 6800

Gas Chromatograph Mass Spectrometer

GC-MS 6800 is a cost-effective gas chromatograph mass spectrometer provided by Skyray Instrument. The products hold several patented technologies, and are widely used in industrial inspection, food hygiene, environmental protection, etc.



### Current Customers:

- Industrial inspection: textile, electricity & electronics, plastic cement, cosmetics
- Food hygiene: pesticide residues, flavors and fragrances
- Environmental protection: air, water, soil, solid waste
- Pharmaceutical: pharmaceutical industries, drug inspection
- Petrochemical: oil refineries, chemical plants
- Public security organ: explosives, forensic evidence

### Highlights:

#### Hardware

- Electronic pressure/flow control system (EPC/EFC) for self-developed GC 6800 system
- Patented EI filament set provides highly efficient electron emission, a maximum of 350  $\mu$  A
- Quality mass analyzer with pre-filter reduces quadrupole pollution
- High-energy dynode electron multiplier ensures good sensitivity
- Vacuum system with quality mechanical and turbo molecular pumps guarantees stability and reliability
- Full scale gauges monitor vacuum states in real time
- Self protection system guarantees safety of operators and core parts under abnormal conditions
- RF power supply digital compensation technology ensures better sensitivity and resolution in full mass range

#### Software

- The software "ChemAnalyst" controls auto sampler (AS), gas chromatograph (GC) and mass spectrometer (MS); data are acquired and transferred by high-speed network card
- Full Scan and selective Ion Monitoring (SIM) modes are available
- The system supports manual and automatic tuning, display of total ion current (TIC) and mass chromatogram (MC)
- Skyray Instrument is the only legal distributor authorized by NIST/EPA/NIH in China mainland, which guarantees the latest version and free online upgrade of NIST (current version NIST 2011)
- The data processing section searches target compounds in NIST 2011 based on mass spectra of samples, displays search results which include retention times, structural formula and standard mass spectra, and compares the abundances of standard and real target ions. Users can make accurate qualitative and quantitative analyses

### Features:

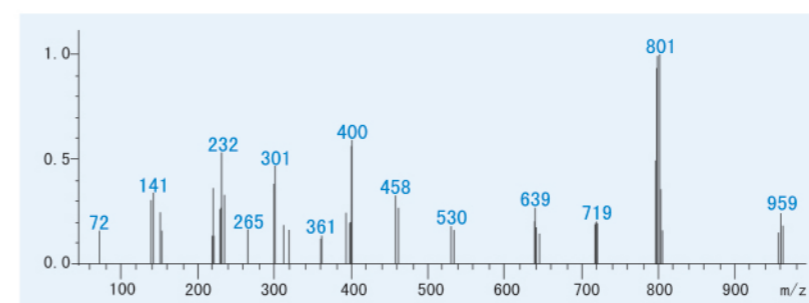
- Superior quality:** it uses high-end core parts, which ensures GC-MS 6800 high quality
- Meeting high demands:** Skyray provides necessity parts, and meets multiple requirements from clients in different fields
- User-friendly design:** it facilitates easy operation and convenient maintenance
- High-efficiency ionization source:** modularization design, employing Skyray patented ion source, having high ionization efficiency, and enhancing sensitivity
- ChemAnalyst software:** convenient operation, data acquisition and processing
- Highly cost-effective:** offering more benefits while meeting all application demands
- Scientific solutions:** We offer customers perfectly customized solutions
- Consumables with favorable price:** most consumables and parts are self-developed, which save a lot of maintenance cost, while providing high performance
- Satisfactory post-sale service:** Skyray makes a quick response to client's demands, with professional technicians offering 24-hour services.

### A Comparison of Skyray GC-MS and Competitors' GC-MS:

Skyray GC-MS	Competitors' GC-MS
Highly cost-effective	Expensive
Favorable price, low maintenance cost	Imported consumables, high maintenance cost
Rapid service response, professional technicians offering 24-hour service	Slow service response, normally more than a week

### Application:

Brominated flame-retardant (BFR), Volatile Organic Compounds (VOCs), polycyclic aromatic hydrocarbons (PAHs), phthalate, etc.



Mass spectrum of deca polybrominated biphenyl ether

### Laws and Regulations:

- REACH is a European Union regulation concerning the Registration, Evaluation, Authorization and restriction of Chemicals, which includes all substances and goods imported into EU except those are clearly exempted.
- RoHS directive refers to the rules on the restriction of the use of certain hazardous substances in electrical and electronic equipment; it specifies the maximal limitation of six hazardous substances explicitly, with product range almost covering all electronics, electrical appliance, medical products, communication products, toy, security products, etc.